



# WAIKAIA SCHOOL

**NURTURE, ENRICH, INSPIRE**

*We are kind / We are responsible / We do our Best*

29 April 2025

Dear Whānau,

Term 2 is up and running, and we've had a great start! It's been wonderful to have the students back at school, full of energy and ready for another exciting term of learning and activities.

Hockey and rugby training are already underway, and it's fantastic to see so many students getting involved. Cross country is also coming up—details about the event can be found later in this newsletter.

We're looking forward to a busy and rewarding term ahead!

Next week on Friday, 9 May, we will be holding our school assembly at 9am. It's a great opportunity to come together, celebrate student achievements, and share important updates.

Further communication and reminders will be shared via the School App, so please keep an eye out for notifications. We look forward to seeing you there!

**SCHOOL + YOU =  
SUCCESS EVERY  
DAY MATTERS**



# WAIKAIA SCHOOL

**NURTURE, ENRICH, INSPIRE**

*We are kind / We are responsible / We do our Best*

We're pleased to share that the pedestrian crossing outside the school was completed over the holidays, making it safer for our tamariki and whānau to get to and from school.

Please also note that the speed limit for the school zone is now 30 km/h from 8:30 am to 9am and 3pm to 3:15 pm. Thank you for helping us keep our students safe by adhering to these new road rules.

TOD - School closure

On Thursday 31 July, school will be closed for instruction as our staff will be attending a PLD day in Invercargill.

Best wishes,  
Phillipus and team



**Remember to come  
dressed in your best Camo  
gears on Friday to  
celebrate Duck Shooting!**

## Waimea Cross Country 2025

**Date:** Wednesday, 21 May 2025 (Postponement date - 22 May 2025)  
**Starting Time:** 1pm  
**Where:** David McKee's and Clarke Horrell's paddocks (Will be signposted on the Riversdale Waikaia Road at the Hazeldine Road Turn off).

The following would be very helpful on the day;

- Students will have lunch at school and then they need to be collected from 12:30pm onwards.
- If you are not able to transport your child/ren to the cross-country please contact school, no later than 9am Thursday morning. There will be no buses running after the cross country.
- We could require Parent field marshals.
- Races will run consecutively and students must be ready.
- Toilet facilities: port-a-loo and there are toilets in the township next to the store. (see map below)
- The cross country is at the properties of David McKee's and Clarke Horrell's paddocks (Will be posted on the Riversdale Waikaia Road at the Hazeldine Road Turn off).
- Please bring a water bottle for your child/ren.
- Gym shoes must be worn. No Sprigs, Spikes, Socks or Bare Feet
- Uniforms will be given out to each child, please return unwashed asap.
- Race order: 5 years, 13 years, 6 years, 12 years, 7 years, 8 years, 9 years, 10 years, 11 years

Kind Regards  
Phillipus Gerber



# Community Health Day

10<sup>th</sup> May 2025

9am – 5pm

## *Switzers Museum*

We have a fantastic initiative in support of rural family health

This is a **free** service

### What's on offer.....

1. The Woman's Health Bus for more information see [www.womanshealth.nz](http://www.womanshealth.nz)

Please register before 8 May for this service so that any specific queries can be prepared for.

go to:

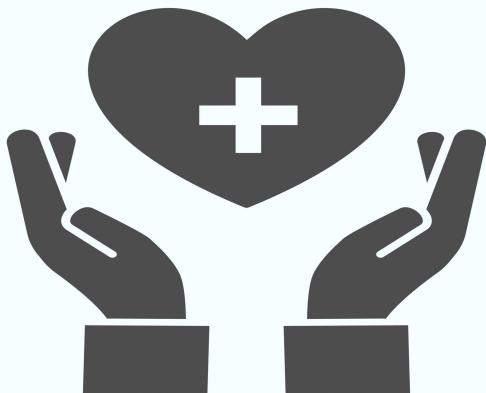
[www.womanshealth.nz](http://www.womanshealth.nz)

click on *Contact* (top right of screen) scroll down to *Contact Form*

On the contact form it's important to state that you wish to be seen at the  
Waikaia Community Health Day

2. Dave Cox Long-Term Conditions nurse for Well South  
Specialising in Diabetes and Gout

**Come along and share a cuppa and sandwich**



# ST MARY'S ANGLICAN CHURCH, WAIKAIA

7th May 2025

Harvest Festival Service

11 am Inverlochy

Followed by Thanksgiving Duck Lunch

12 Noon

Harvest gifts accepted

All welcome

Helen Christie [rjhmchristie@gmail.com](mailto:rjhmchristie@gmail.com)

for numbers





---

# BRENNY & THE BUSHWHACKERS

## THE GREAT SOUTHLAND HALL PARTY

Lachie Hayes & the Tokonui Chainsaw Massacre

**TICKETS \$30 AVAILABLE ONLINE  
@ I-TICKET**

OR FROM THE ST JAMES (61 IRK ST GORE)  
& SOUTHLAND BUSINESS CHAMBER  
(25 DON ST INVERCARGILL)

**FRIDAY 9 MAY  
DOORS OPEN 7:00**

RIVERSDALE COMMUNITY CENTRE

18+ EVENT

CASH BAR

A FUNDRAISER FOR THE WAIKAIA  
FOREST TRAILS



**waikaia forest trails**